



ge and dge saying /j/

Back to The Enchanted Forest



Let's practise reading some of this week's focus words.



challenge



Now, let's write the words or trace them in the air.

hedge



Now, let's write the words or trace them in the air.

badge



Now, let's write the words or trace them in the air.

orange

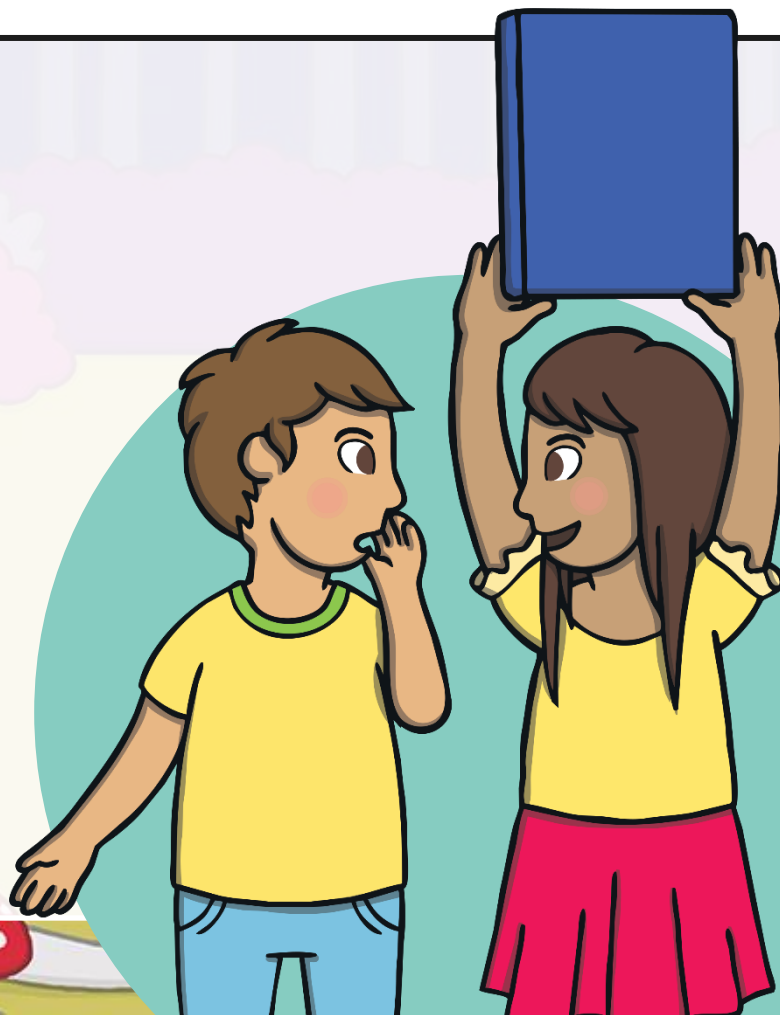


Now, let's write the words or trace them in the air.

Large



Today we are learning to read and sort words and choose different spellings for the same sound.





After school, Sam invited Gabi and Lily back to play at her house. “So, what is the big surprise?” asked Gabi excitedly as she sat on the edge of the bed.



Sam pulled the magic book out from under her bed. "This book can take us to meet anyone we like," she explained. "Fancy meeting some folk with real magic powers?"
"Yes!" cried Lily and Gabi.

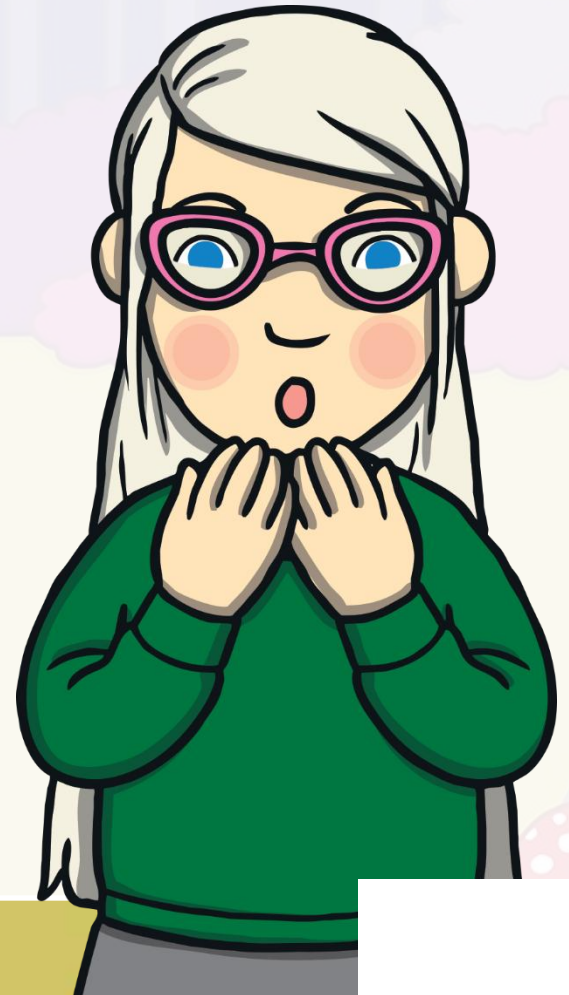


Sam opened the book and the bedroom faded around them. Suddenly, they were back in Shine and Grime's Enchanted Forest. "Wow!" said Lily. "Where are we?"

Sam, Gabi and Lily are in the Enchanted Forest.
There are some words on the leaves.



What do you notice about the words?





challenge



bridge



large



forge



jelly



hedge



hinge



gem



dodge



magic

All of the words contain the /j/ phoneme.
But how do we know when to use each one?

Check



The /j/ Family

There are toadstool families growing in the forest. This is the /j/ family.
Each toadstool shows a different way of spelling the /j/ sound.
Click each toadstool for a spelling rule.



The graphemes are usually used...



- at the end of a word
- after a short vowel sound (short vowels are spoken as a pure sound)

badge
fudge
br**i**dge



- at the beginning or in the middle of a word

jump
jelly
in**j**ury



- at the end of a word
- after a long vowel sound, a vowel digraph or a consonant.

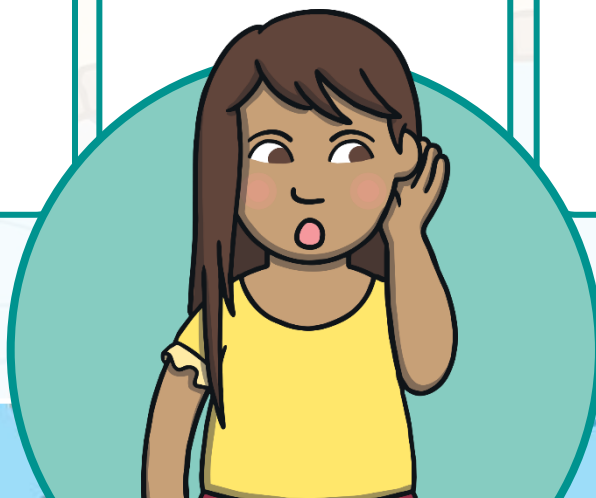
huge
barge
forge
oran**g**e



- when it is followed by 'e', 'i' or 'y'.

gem
gymnast
Giant

Some exceptions:
get
giggle



Fairy Ring Lost Words

The fairies have found some lost words around the forest. Help them to sort the words back to their spelling toadstool.

You could get active today and play the Line Up Physically Active Phonics Game or the Sound Family Word Sort Physically Active Phonics Game.



Click us for Physically Active Phonics tips!



dge

splodge

j

ge

g



Why is this word spelt with the letters 'dge'?

'Splodge' has the short vowel sound /o/ in it and the /j/ sound is at the end of the word.

dgge

splodge

j

ge

charge

g



Why is this word spelt with the letters 'ge'?

'Charge' has the vowel digraph /ar/ in it and the /j/ sound is at the end of the word.

dge

splodge

j

ge

charge
rage

g



Why is this word spelt with the letters 'ge'?

'Rage' has the long vowel sound /ai/ in it and the /j/ sound is at the end of the word.

dge

splodge

j

jazz

ge

charge
rage

g



Why is this word spelt with the letter 'j'?

In 'jazz' the /j/ sound is at the beginning of the word.

dgge

splodge

j

jazz

ge

charge
rage

g

ginger



Why is this word spelt with the letter 'g'?

In 'ginger' there is an 'i' after the first 'g' and an 'e' after the second 'g'.



dge

splodge
nudge



j

jazz



ge

charge
rage



g

ginger



Why is this word spelt with the letters 'dge'?

'Nudge' has the short vowel sound /u/ in it and the /j/ sound is at the end of the word.

dge

splodge
nudge

j

jazz

ge

charge
rage

g

ginger
germ



Why is this word spelt with the letter 'g'?

In 'germ' there is an 'e' after the 'g'..



dge

splodge
nudge



j

jazz



ge

charge
rage
fringe



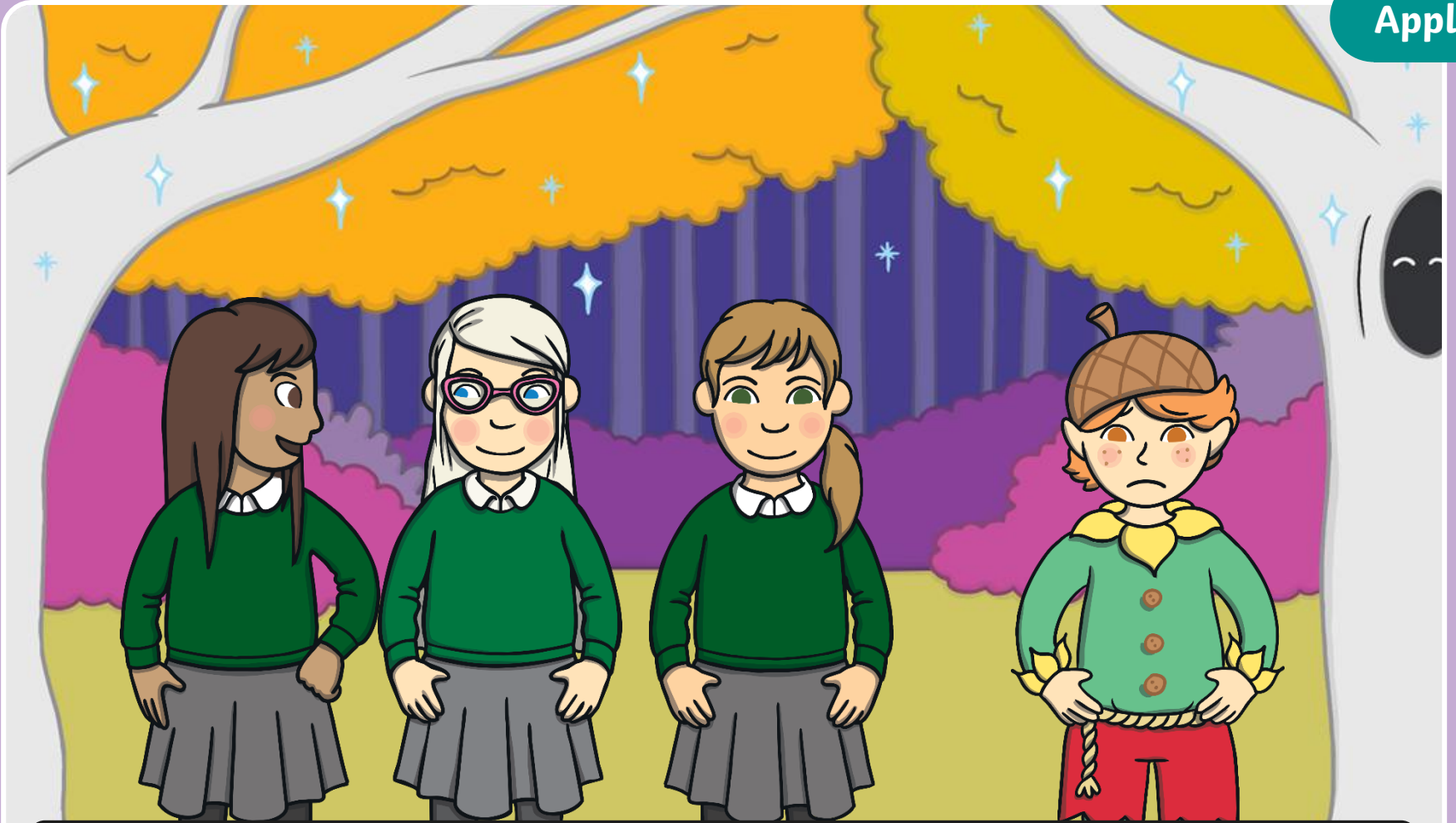
g

ginger
germ



Why is this word spelt with the letters 'ge'?

'Fringe' has the consonant 'n' before the /j/ sound. The /j/ sound is at the end of the word.

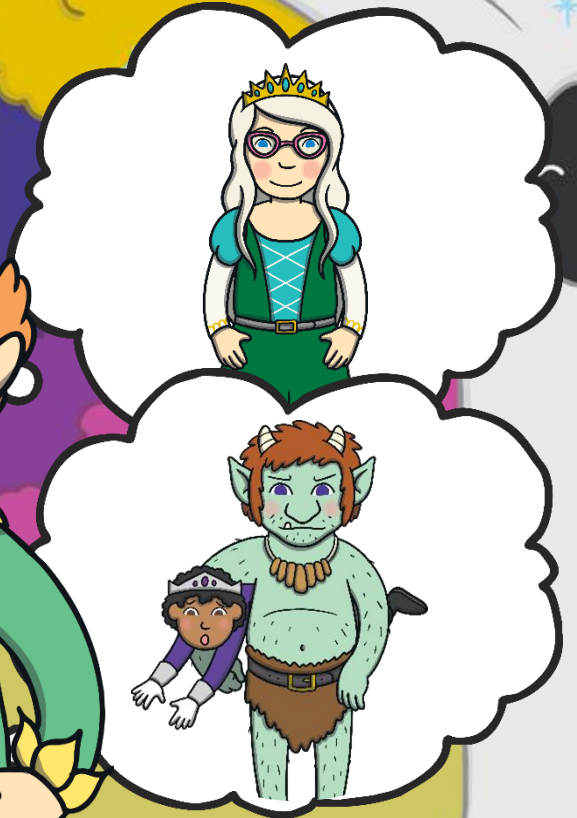


Sam explained that she and Kit had been to the forest before. Suddenly, an elf came running towards them. "Princess Lily!" he whispered. "You're here!"

The elf thinks Lily is a princess! He is too shy to speak so he hands a note to Lily instead. Let's read it!"

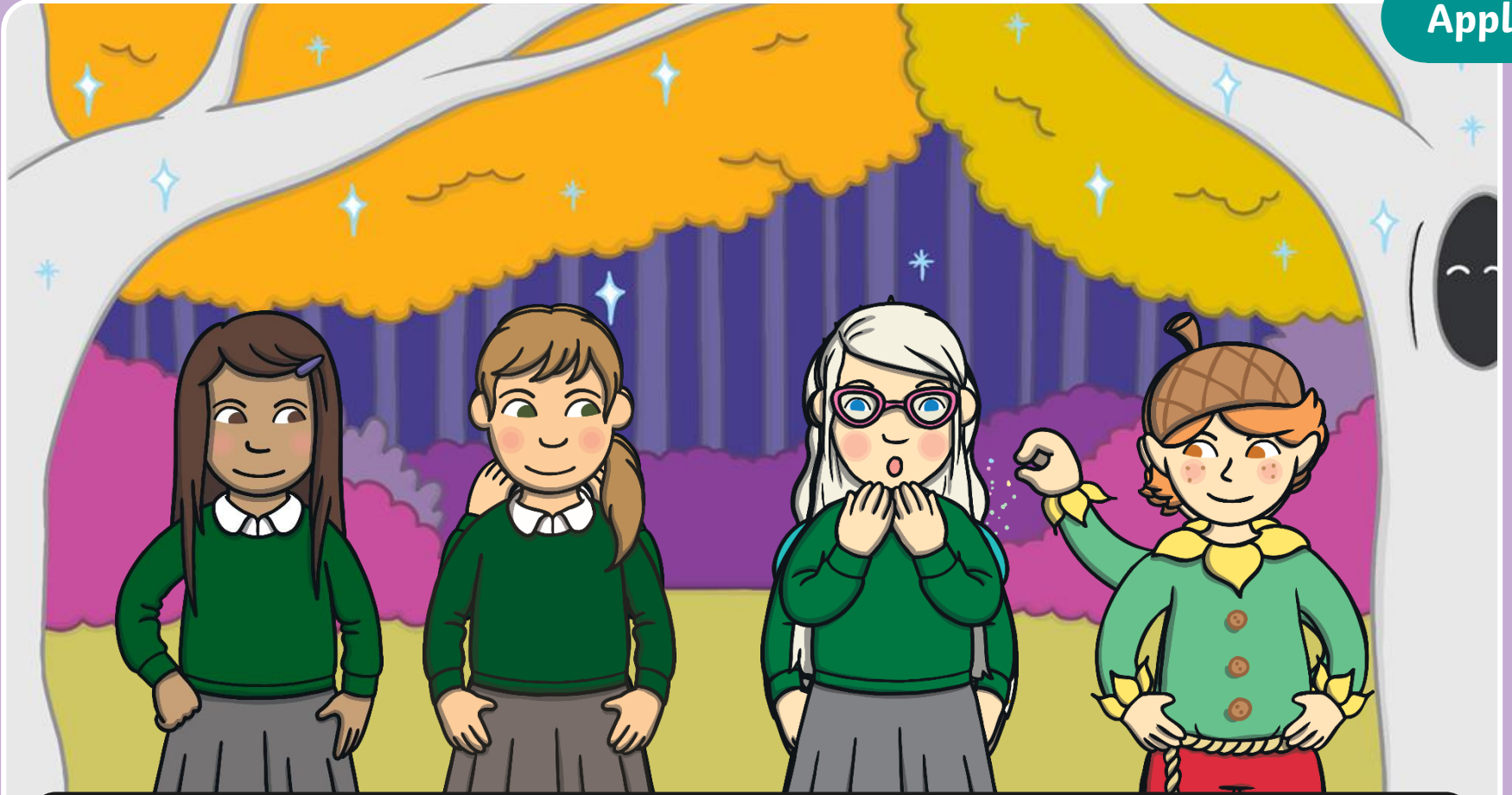


Princess Lily, we need your help. A **huge** troll appeared in a **rage** and took Prince Ash! He jumped over the **large bridge**, like a **gymnast**. I hope Prince Ash did not get an **injury**.



Show





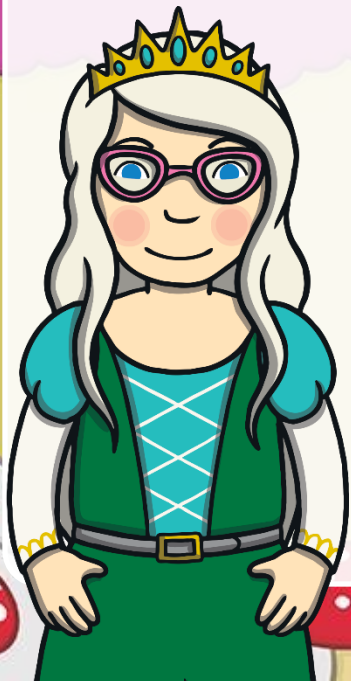
“I’m not a princess!” said Lily.

“You are one in the Enchanted Forest,” whispered the Elf as he sprinkled her with magic dust. Immediately, Lily transformed into a brave princess!

Today, we have learnt ...

to read and sort
/j/ sound family
spellings.

The adventure
continues next lesson!





Sarge's Sorting



Sort the words according to their spellings. Write the words in the correct column. What is the rule for each grapheme?

dge	j	ge	g
bridge	jam	cage	gym
strange	jazz	fudge	magic
ledge	jelly	hinge	germ
badge	dodge	huge	_____
page	jumping	nudge	_____
splodge	jolly	charge	
forge	jumper	stage	
joy	Smudge	barge	
sledge	gem	Jelly	
fringe		gel	
_____	_____	_____	
_____	_____	_____	
_____		_____	
_____		_____	



Challenge

Can you think of any other words that would be suitable for each box? Can you write them down? How can you check?